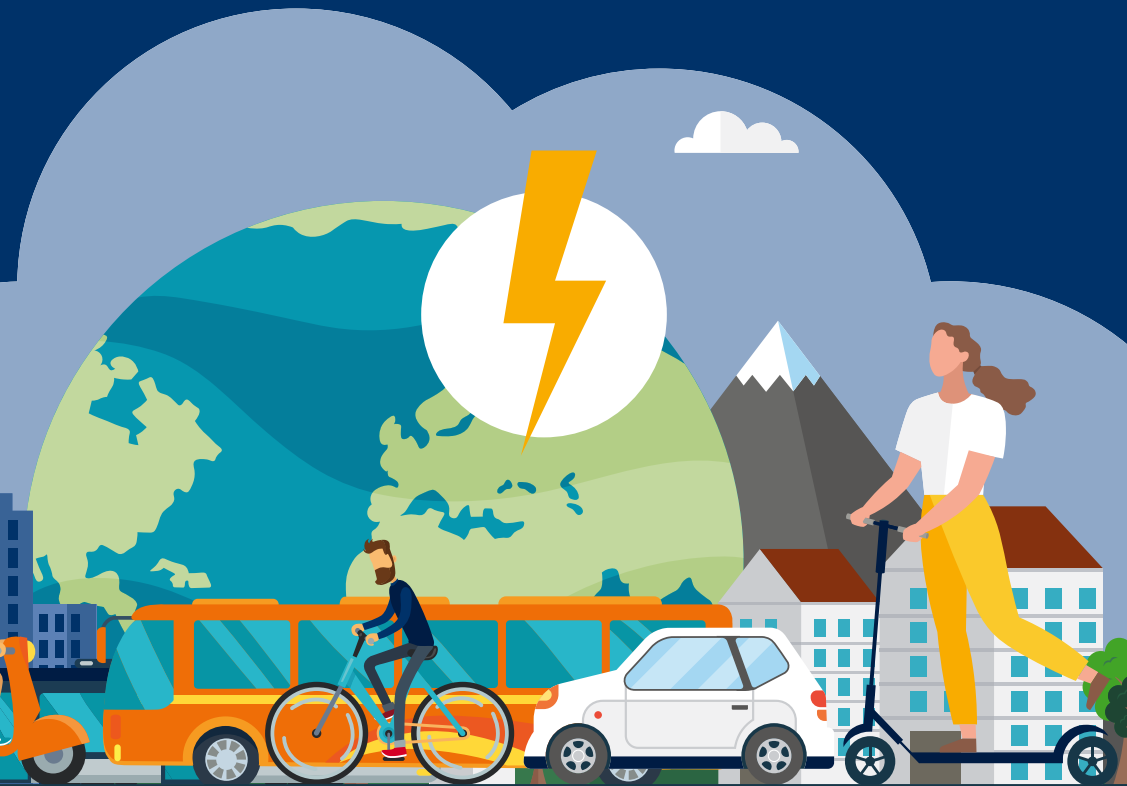


Mobility focus concept

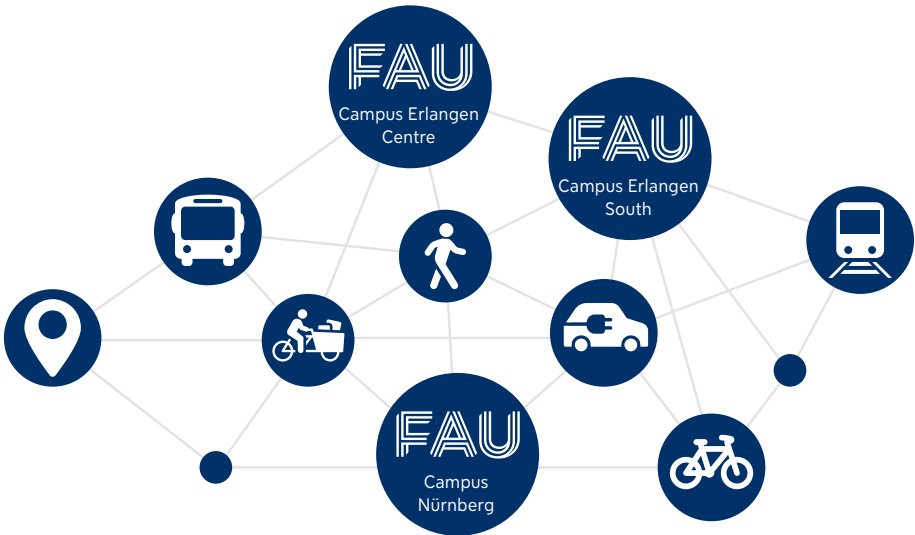
at Friedrich-Alexander-Universität Erlangen-Nürnberg

Short version



Vision

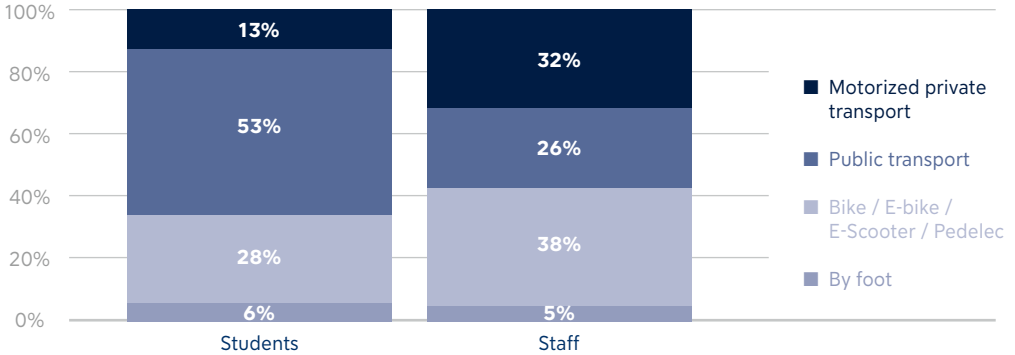
FAU is spread across a large area in the cities of Erlangen, Nuremberg and Fürth and is a daily destination for 40,000 students and 65,000 employees. Each site has different conditions that impact mobility. In its Climate Action Plan, FAU set the objective of reducing its greenhouse gas (GHG) emissions, which also includes emissions caused by commuting. FAU aims to meet its targets in this area by developing and strategically supporting measures related to sustainable mobility. During a decade of transformation, FAU is working toward connecting all of its sites with a climate-friendly and multi-modal mobility concept that will improve journeying to and from each location.



Mobility at FAU

FAU conducted a mobility survey to find out how its members commute. The modal split shows how much each mode of transport accounts for the journeys made. Various environmentally friendly forms of mobility (eco-mobility) including walking and cycling as well as local public transport are available as alternatives to private transport. Despite the high proportion of eco-mobility, which according to the survey is mainly chosen for environmental and cost reasons but also for more exercise, 13% of students and 32% of employees drive from home to the university (main routes).

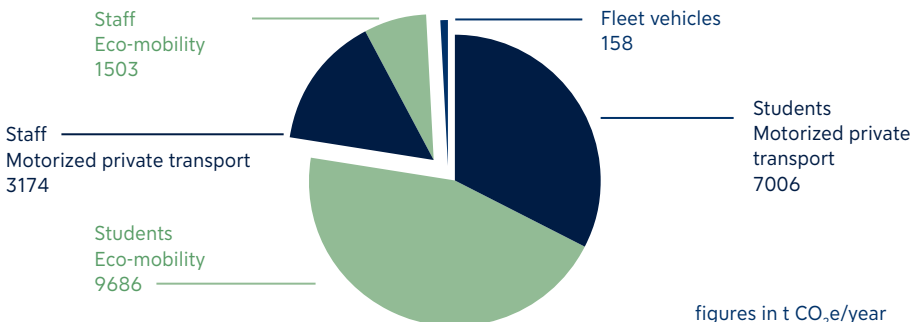
Modal split of trips



Two thirds of students and almost 60% of employees who currently drive to the main university site are open to using eco-mobility as an alternative for their commute if the effort required to switch is reasonable. For a permanent shift, new measures need to be introduced to increase the attractiveness of eco-mobility. These include, for example, a discounted ticket for public transport, developing e-charging infrastructure and covered bicycle parking facilities.

Greenhouse gas emissions balance 2023

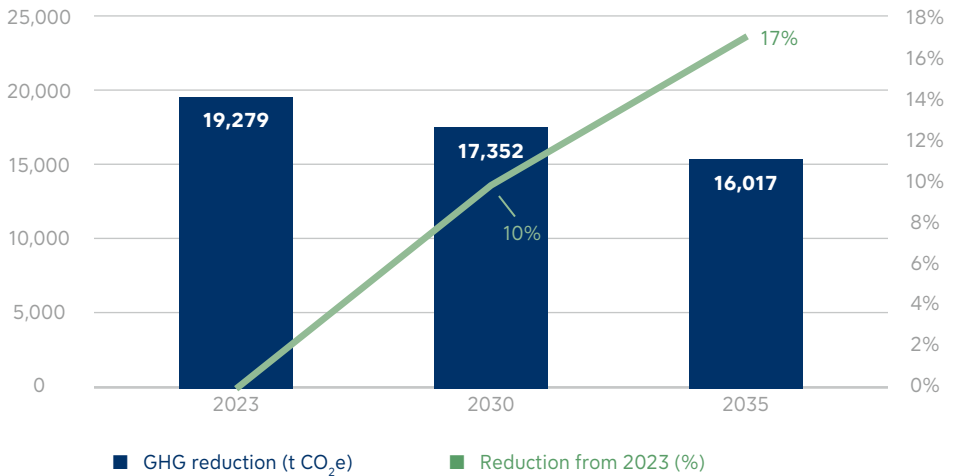
In 2023, FAU's total commuting-related emissions amounted to around 21,500 t CO₂e. Students account for almost 16,600 t CO₂e for the passenger kilometers traveled on the main routes and routes between locations. Almost half of this is caused by the 13% of private transport users alone. Around 4,600 tons of CO₂e are emitted by employees' commutes, two thirds of which are attributable to private transport.



Emissions targets

In order to reduce commuting-related GHG emissions, FAU is striving to introduce measures to promote eco-mobility. These measures target FAU members who, according to the survey, could potentially imagine switching to climate-friendly means of transport with reasonable effort, using them permanently as their main means of transportation. It is imperative that we harness this potential of reducing GHG emissions. The aim is to reduce commuting-related GHG emissions from the main routes traveled by 10% by 2030 and by 17% by 2035.

GHG targets for commuting



Fields of action and measures

Measures were developed based on research into framework conditions and mobility behavior. FAU members were able to submit their own suggestions online via the ideas box. Further proposals for measures came from the mobility workshop with internal FAU experts and external stakeholders.



The catalog of measures is both a working basis and a declaration of intent and comprises seven fields of action to promote sustainable mobility: cycling, intermodality, public transport, private transport, communication, organization and monitoring. Specific measures were derived for each field of action and prioritized according to their impact, feasibility and financial viability.

Field of action	Extract from catalogue measures
------------------------	--

By bike	<ul style="list-style-type: none">- Expansion of bike parking facilities and services- Purchasing cargo bikes- ADFC certificate "cycle-friendly employer"
----------------	---



Inter-modality	<ul style="list-style-type: none">- Expansion of bike loan stations- Expansion of E-Scooter parking
-----------------------	--



Public transport	<ul style="list-style-type: none">- Subsidies for job ticket / funding for semester tickets- Raising attractiveness of public transport
-------------------------	--



Motorized private transport	<ul style="list-style-type: none">- Promoting electromobility- Promoting car pools
------------------------------------	---



Communication	<ul style="list-style-type: none">- Awareness and PR- Support for existing measures
----------------------	--



Organization	<ul style="list-style-type: none">- Promoting working from home- Introduction of mobility management
---------------------	---



Controlling	<ul style="list-style-type: none">- Regular mobility surveys
--------------------	--



Contact:

Friedrich-Alexander-Universität Erlangen-Nürnberg
Green Office – Sustainability and Climate Action
Freyeslebenstraße 1
91058 Erlangen

Gefördert durch:



Bundesministerium
für Wirtschaft
und Klimaschutz



NATIONALE
KLIMASCHUTZ
INITIATIVE

aufgrund eines Beschlusses
des Deutschen Bundestages



The full version of the mobility focus concept
(German) and further information on
climate-friendly mobility can be found at:
fau.info/mobility

